

CASA DI LUSO

Luxury Living. Strategic Investment. Prime Location.



JIBOWU
YABA,
LAGOS.

CASA DI
LUSO



REALTY JUNCTION
PROPERTIES LIMITED

LUXURY LIVING STRATEGIC INVESTMENT PRIME LOCATION



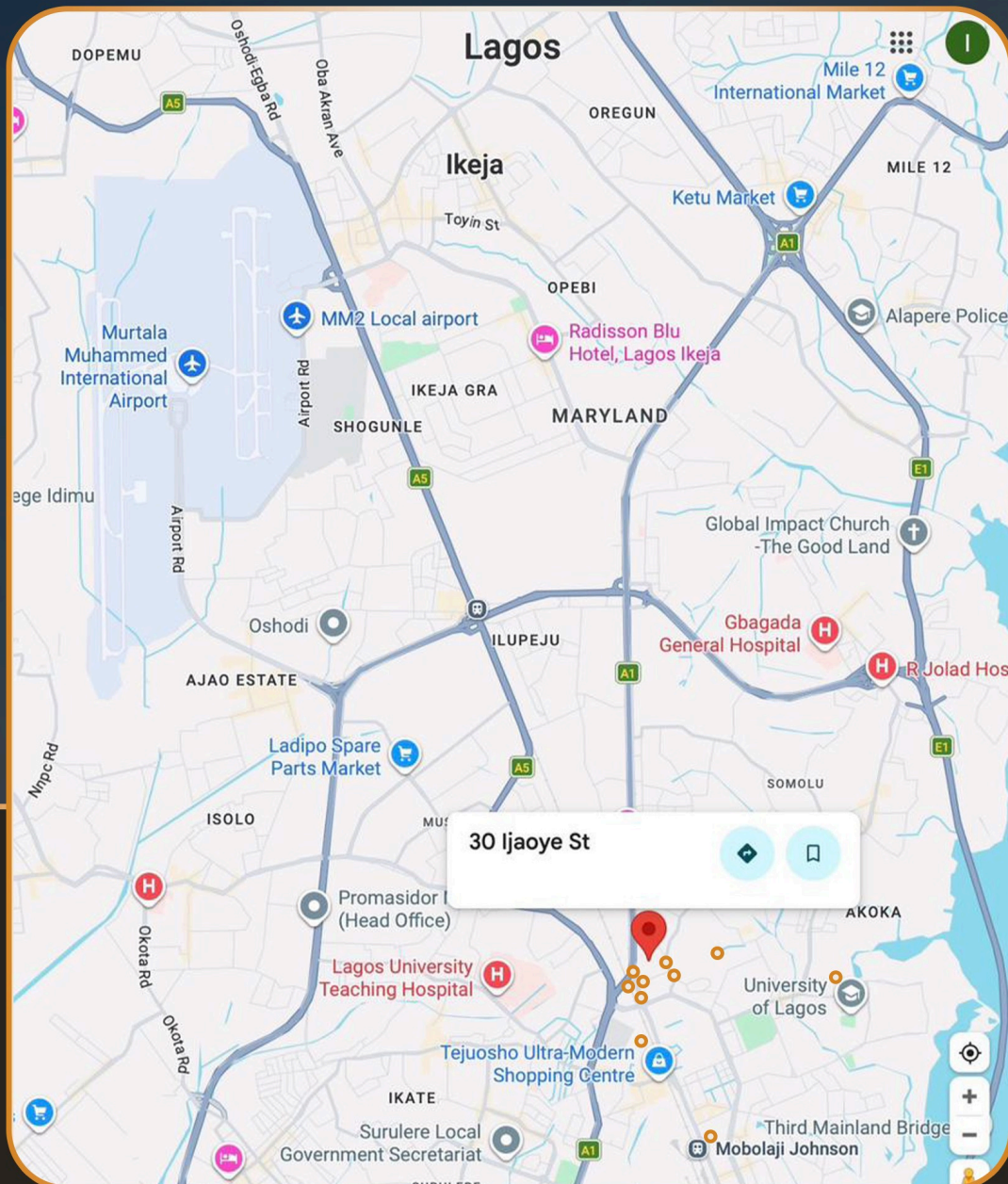
ABOUT

More than just a residence, **Casa di Lusso (An Italian word for 'Luxury House')** is a smart investment opportunity. With strong rental demand in **Yaba**, it offers the potential for consistent monthly income and a projected return on investment within 8 years. With pre-launch pricing and flexible payment options, this is the ideal time to secure your unit early.

Casa di Lusso is a boutique **three-storey luxury apartment** development located in **30 Ijaoye Street, Jibowu, Yaba**, one of Lagos Mainland's most active and high-demand areas. Featuring a mix of studio, one-bedroom, and two-bedroom units, the project is designed for modern living, with premium amenities including smart features, 24/7 power, security, a pool, and a gym, all within close proximity to major corporate hubs and key transport links.



KEY NEARBY LANDMARKS



- WAEC Headquarters
- Yaba College of Technology
- NUPENG Headquarters
- GIG Logistics Headquarters
- GUO Transport Headquarters

- Mobolaji Train Station
- Tejuosho Shopping Mall
- University of Lagos
- Closer to the Igbogbi Hospital
- Closer to 68 Nigerian Army Reference Hospital Yaba

TRAVEL ACCESSIBILITY

Casa Di Lusso also benefits from excellent connectivity to major parts of Lagos:



5 MINUTES TO SURULERE



8 MINUTES TO THIRD MAINLAND



MURTALA MOHAMMED AIRPORT - 20 MINUTES

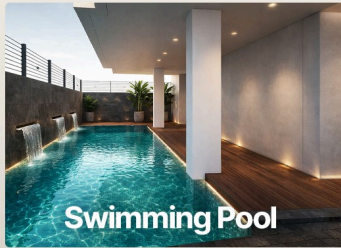


UNIVERSITY OF LAGOS - 5 MINUTES



YABA COLLEGE OF TECHNOLOGY - 2 MINUTES

FEATURES



Swimming Pool



Laundromart



Uniform Security



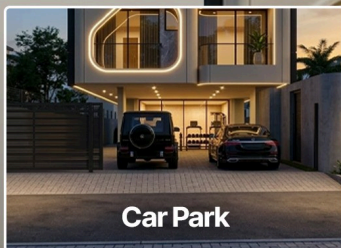
Gym



Solar & Inverter



Smartlock automation



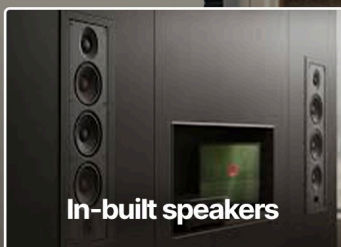
Car Park



CCTV



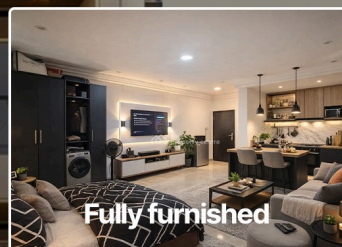
Wifi



In-built speakers



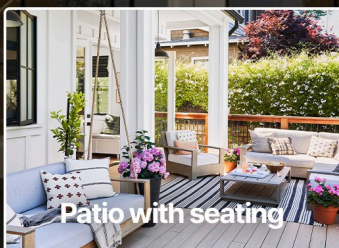
Smoke detectors



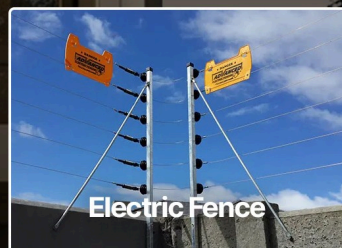
Fully furnished



Tiles & POP



Patio with seating



Electric Fence

CASA DI LUSSO

CASA DI
LUSSO

INTERIOR



BEDROOM



LIVING ROOM

CASA
DI LUSSO

GASA DI
LUSSO

PAYMENT PLAN SETUP

LUXURY STUDIO SUITES

(Outright Payment: ₦60M)

1 - 3 months **₦61M**

50% initial deposits and a 50% payment spread

4 - 6 months **₦63M**

50% initial deposits and a 50% payment spread

7 - 9 months **₦65M**

50% initial deposits and a 50% payment spread

LUXURY ONE BEDROOM SUITES

(Outright Payment: ₦90M)

1 - 3 months **₦92M**

50% initial deposits and a 50% payment spread

4 - 6 months **₦94M**

50% initial deposits and a 50% payment spread

7 - 9 months **₦96M**

50% initial deposits and a 50% payment spread

LUXURY TWO BEDROOM SUITES

(Outright Payment: ₦140M)

1 - 3 months **₦142M**

50% initial deposits and a 50% payment spread

4 - 6 months **₦144M**

50% initial deposits and a 50% payment spread

7 - 9 months **₦146M**

50% initial deposits and a 50% payment spread

ALL UNITS ARE FULLY FURNISHED

REVENUE TABLE WITH 21 DAYS OCCUPANCY PER MONTH

Room Type	Rate \ Night	Gross Monthly Review (21 days)	Net monthly Revenue (After 40%)	Net Yearly Revenue (12 months)
Studio	₦50,000	₦1,050,000	₦630,000	₦7,560,000
One bedroom	₦80,000	₦1,680,000	₦1,008,000	₦12,096,000
Two bedroom	₦110,000	₦2,310,000	₦1,386,000	₦16,632,000

ROOM SIZES

Studio: 24sqm

One bed: 51sqm

Two bed: 84sqm

Note: A mandatory 40% deduction will be applied to monthly revenue to cover facility management and room maintenance.

Frequently Asked Questions

FAQ

1. WHAT TYPES OF UNITS ARE AVAILABLE AT CASA DI LUSSO?

The development features studio, one-bedroom, and two-bedroom apartments, designed for both shortlet and long-term rental use.

2. WILL THE UNITS BE FURNISHED?

Yes, Units comes fully furnished and setup, allowing investors to have a functional, move-in-ready space.

All unit are fully furnished and can be customized according to the investor's preference or target market.

3. WHAT IS THE PAYMENT STRUCTURE?

Investors can secure a unit with a 50% initial deposit, with the remaining 50% payable over 3 – 9 months during the construction period.

4. WHEN WILL CONSTRUCTION BEGIN AND WHAT IS THE EXPECTED COMPLETION DATE?

Construction is set to commence by May 2026, with projected completion in July 2027.

5. IS PROPERTY MANAGEMENT PROVIDED?

Yes, Casa di Lusso offers professional property management services, including shortlet operations, maintenance, and tenant management.

Frequently Asked Questions

FAQ

6. CAN THE UNITS BE USED FOR SHORT-TERM RENTAL OR CORPORATE LEASING?

Absolutely. The design, location, and amenities make the property ideal for shortlet operations, serviced apartment leasing, or corporate rentals.

7. HOW DOES CASA DI LUSSO GENERATE ROI FOR INVESTORS?

Through premium monthly rentals, shortlet occupancy, and property appreciation in a high-demand area, investors can 12% with a capital recovery period of 8 years depending on the unit type.

8. WHAT MAKES JIBOWU A STRATEGIC INVESTMENT LOCATION?

Jibowu is a thriving commercial and transit hub in Yaba , with proximity to Waec HQ, Nupeng towers, Yaba college of technology, University of Lagos, Mobolaji train station, Gig logistics hq, Chisco transport office, GUO hq.

9. CAN I RESELL MY UNIT BEFORE PROJECT COMPLETION?

Yes. Investors have the option to resell units at market rates prior to completion, providing liquidity and exit flexibility.

10. WHO IS THE DEVELOPMENT COMPANY OF CASA DI LUSSO?

The project is developed by Realty Junction Properties, a trusted real estate development and investment company with experience delivering high-quality residential projects, including their flagship development, Initium in Abule Ijesha, Yaba.

CONTACT INFORMATION

For inquiries, reservations, or further information about Casa Di Lusso, please reach out to us:

- +234 707 279 5849
- Rjpropertiesng@gmail.com
- www.realtyjunctionproperties.com
- 316 Murtala Muhammed Way, Yaba, Lagos



REALTY JUNCTION
PROPERTIES LIMITED

Stay connected with Realty Junction Properties for updates on this and upcoming projects.

*CASA DI
LUSSO*